



◀ LARGE 6" DIAL FACE

For applications requiring 6" master pump gauges, we offer liquid filled panel mounted gauges. The 'MC6' master gauge is available in 30"-0-400 and 30"-0-600 ranges.

4.5" DUPLEX GAUGES ▶

For applications requiring one gauge to monitor two systems, we offer our liquid filled, panel mounted duplex gauge. KEM-X isolator is standard. Lighted option available. 1.6% accuracy. Range 0-400.

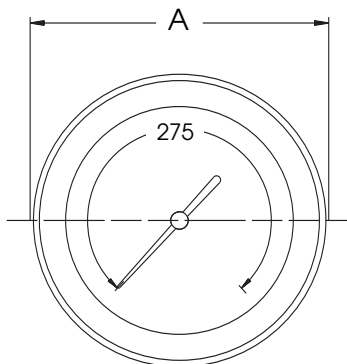


▲ MC6 - 6" LIQUID FILLED MASTER PUMP GAUGE

DPX-410 LIQUID FILLED DUPLEX GAUGE ▲

ORDERING GUIDE

- **PREFIX**
FA-LFP = Fire apparatus style liquid filled panel mount bright stainless steel bezel, 'ICD' internal compensating diaphragm and Kem-X freeze-proof feature.
- **1st NUMBER - (DIAL SIZE)**
2 = 2.5" Dial
3 = 3.5" Dial
4 = 4.5" Dial
6 = 6.0" Dial
- **2nd NUMBER - (ACCURACY)**
1 = 1% Accuracy
- **3rd NUMBER - (WETTED PARTS)**
0 = Phosphor Bronze Tube with Brass Socket
- **RANGE - (SPECIFY BY LETTER)**
A = 0 - 300 PSI
B = 0 - 400 PSI
C = 0 - 600 PSI
D = 30"- 0 - 300 PSI
E = 30"- 0 - 400 PSI
F = 30"- 0 - 600 PSI
- **FILL - (PLEASE SPECIFY)**
G = Interlube Liquid Filled
D = Dry - No Fill
- **OPTIONS - (PLEASE SPECIFY)**
WOB = Reverse Dial, White on Black
IPG = Lighted Gauge. LED if required.
DPM = Shock Proof Movement in Dry Gauge
DOT = Swivel Elbow Installed. DOT Approved
- **EXAMPLE - FA-LFP-210-C-G-WOB**



DIMENSIONS

DIAL	A	E	N	P	Q	Panel Cut-out
2 1/2"	3.23"	1.06"	0.62"	2.63"	0.71"	2.69"
3 1/2"	4.23"	1.06"	0.62"	3.73"	0.71"	3.78"
4 1/2"	5.30"	1.06"	0.62"	4.80"	0.71"	4.85"
6"	6.81"	1.40"	1.20"	6.30"	0.71"	6.35"

